

# TotalSecure PC Setup

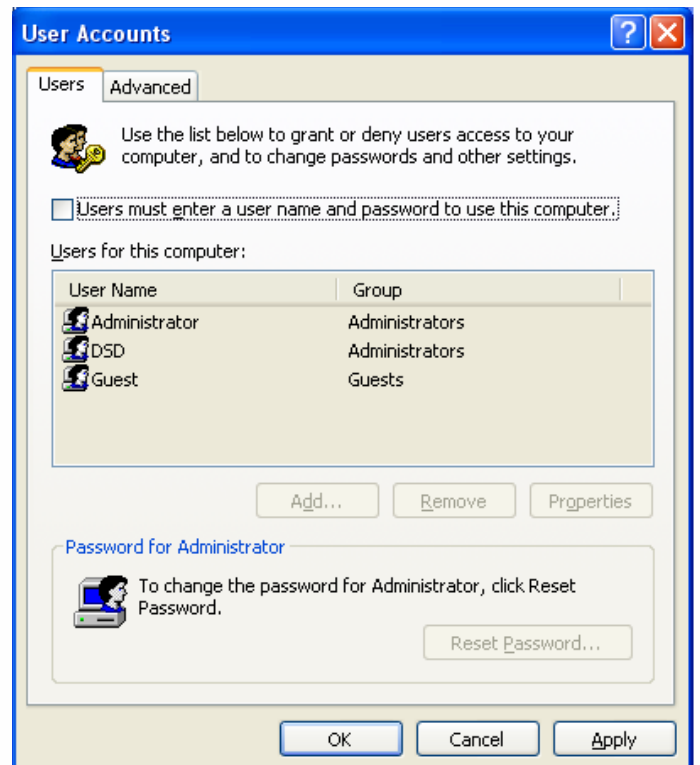
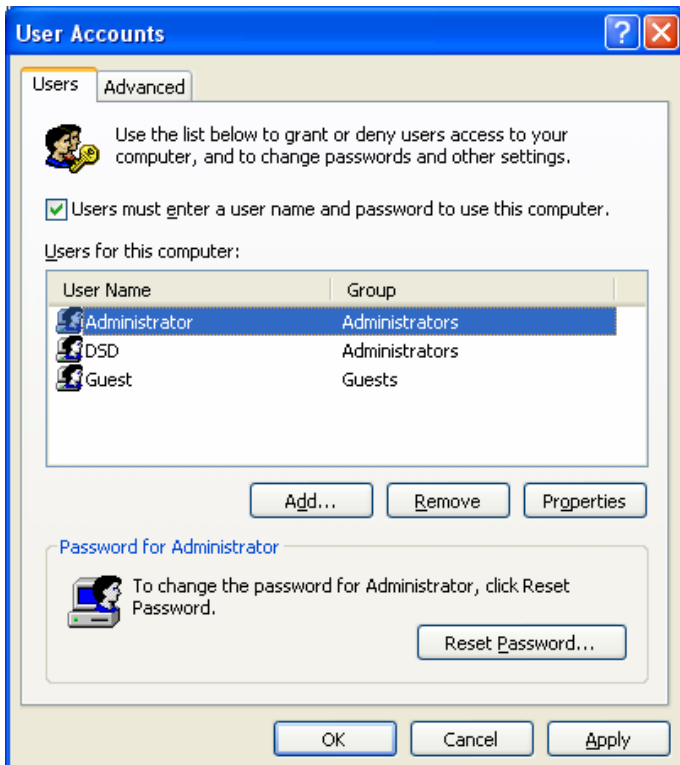
## Changing the Default Logon User

To change the default logon user back to the Capture user, follow the steps below:

1. Click **Start, Run** and enter **“control userpasswords2”** to open the Windows 2000-style User Accounts application.



2. On the Users tab, select the **“Users must enter a user name and password to use this computer”** checkbox, select the AAdministrator user, deselect the **“Users must enter a user name and password to use this computer”** checkbox and then click **OK**.



3. In the Automatically Log On dialog box that appears, type the “**Administrator**” user name, and no password (or whatever you changed it too) for the account you want to be logged on each time you start your computer. Click on **OK**.
  
4. **Restart** the computer to test.