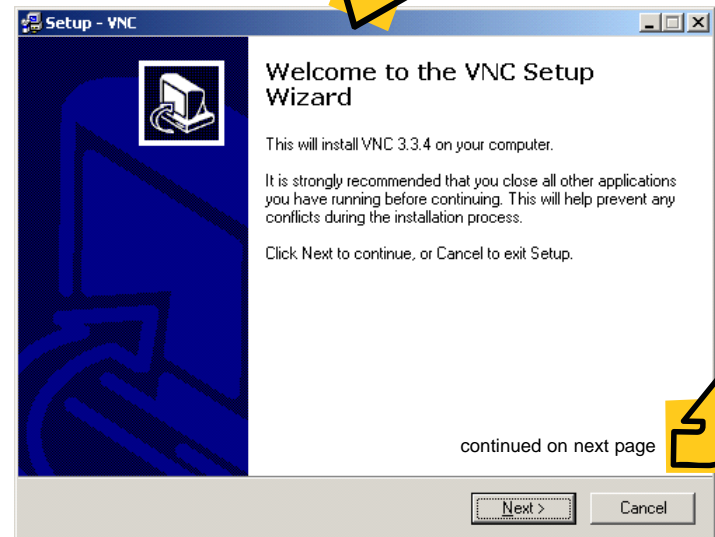
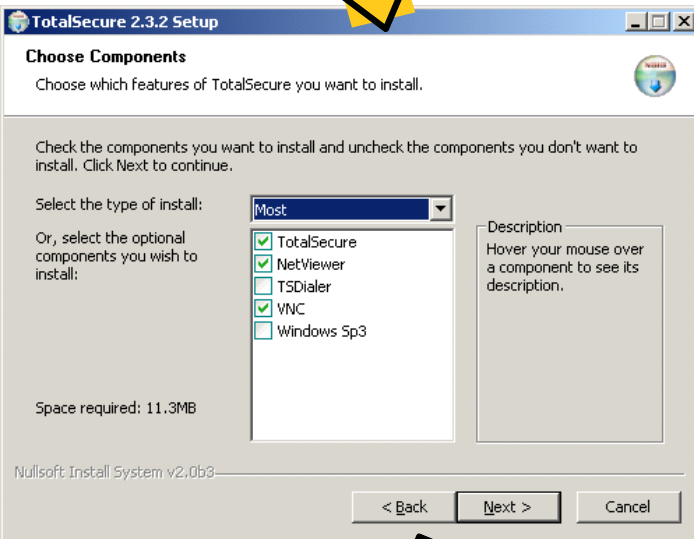
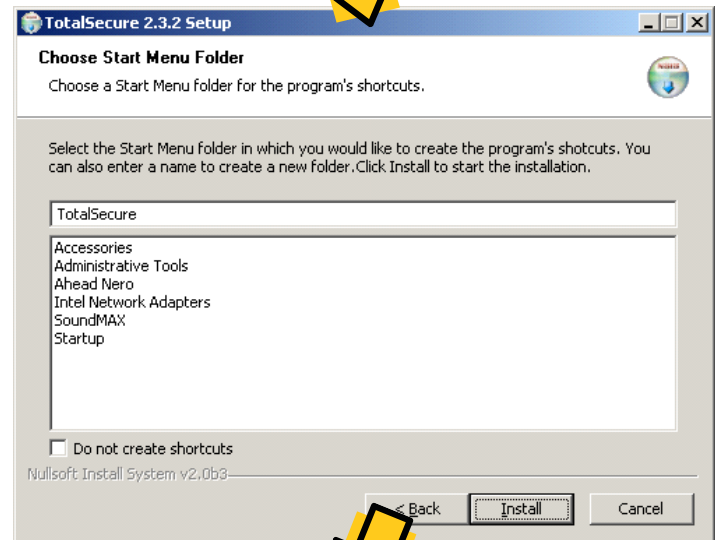
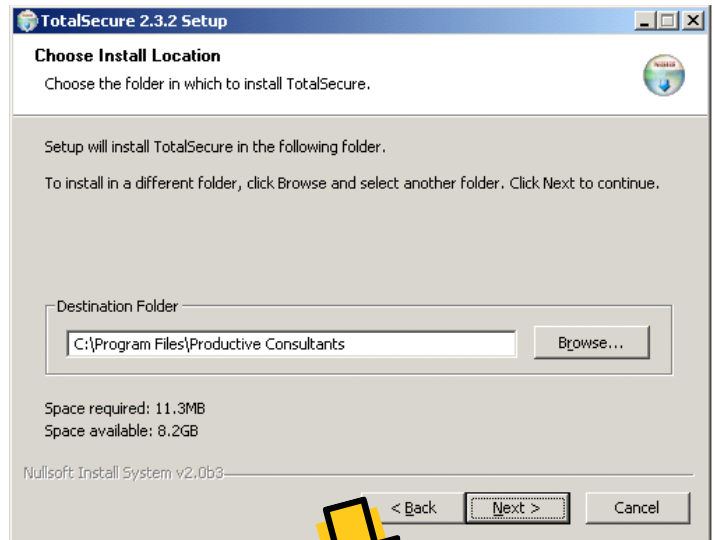
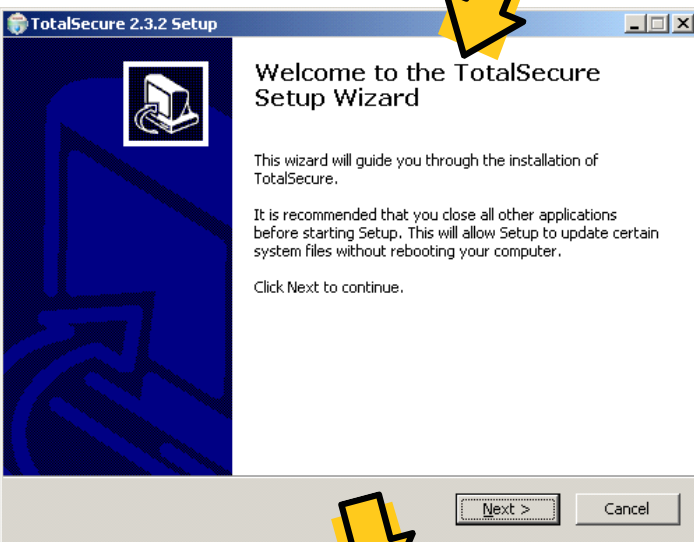


# TotalSecure™

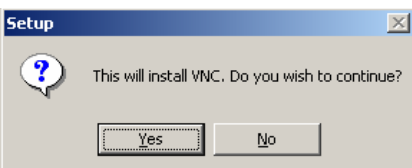
## Instructions for VNC Installation

1. i) Selecting the VNC Install Option from the TotalSecure Setup Wizard (2.3.5 and earlier)  
or  
ii) For 2.4 and later: Browse the installation CD, and find the VNC folder/setup file.

(Install this step only at the DVR location (TotalSecure PC with the cameras attached))

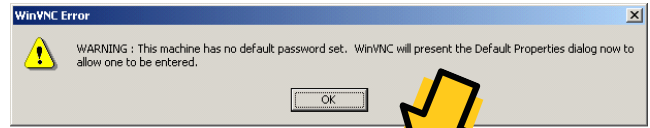
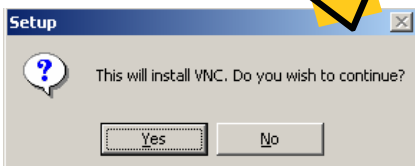
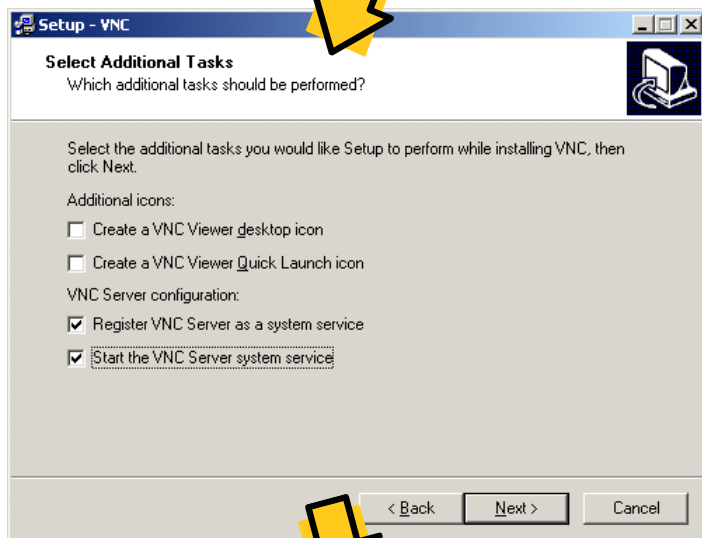
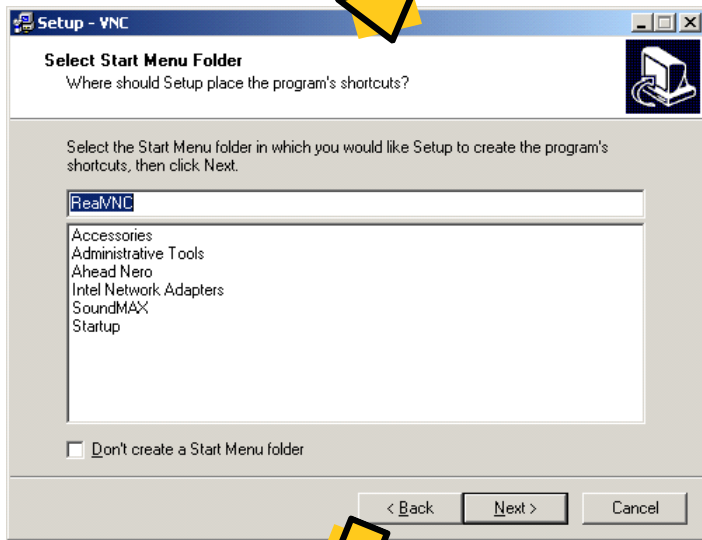
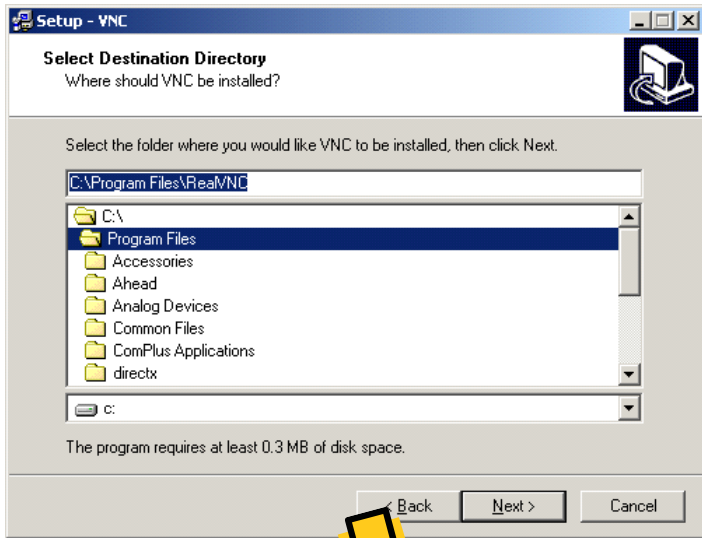


2. Follow the prompts.

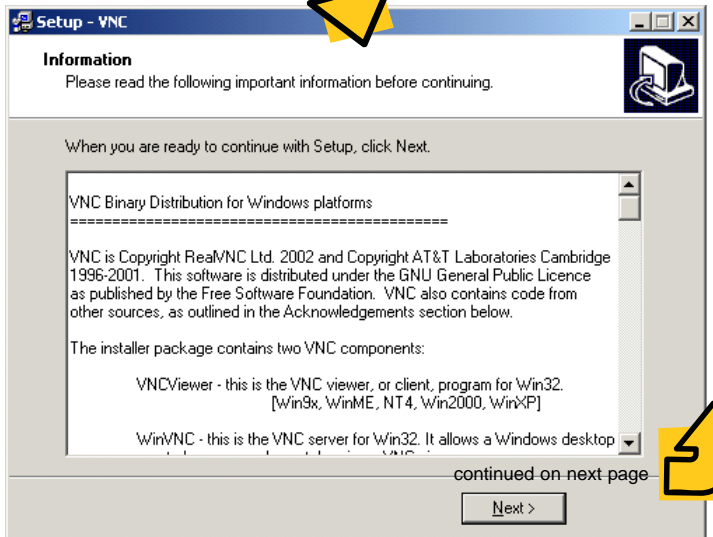
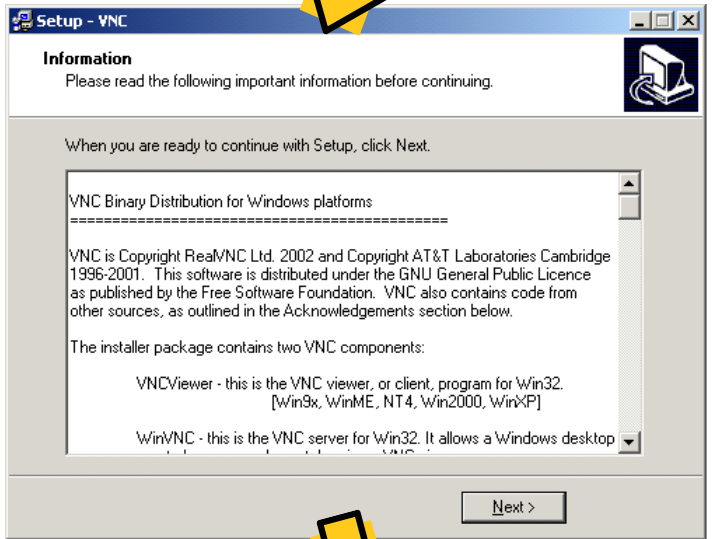
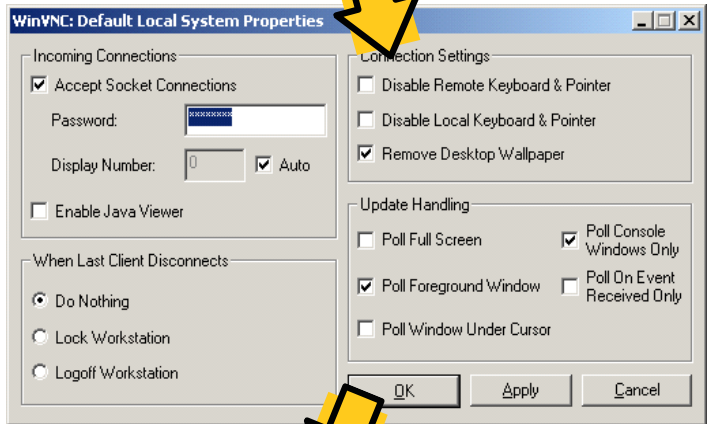


continued on next page

# Instructions for VNC Installation



Select a Password in order for VNC installation to be complete. Failing to enter a password will force VNC to prompt you for a password on the next boot up by the PC.



continued on next page

# Instructions for VNC Installation

For the remote PC (without the cameras attached), simply install VNC Viewer only when prompted by the VNC Wizard via the TotalSecure Install CD).

That is, Select only the Option below, Additional Icons, Create A VNC Viewer Desktop ICON.

DO NOT install VNC Server on the remote computer.

