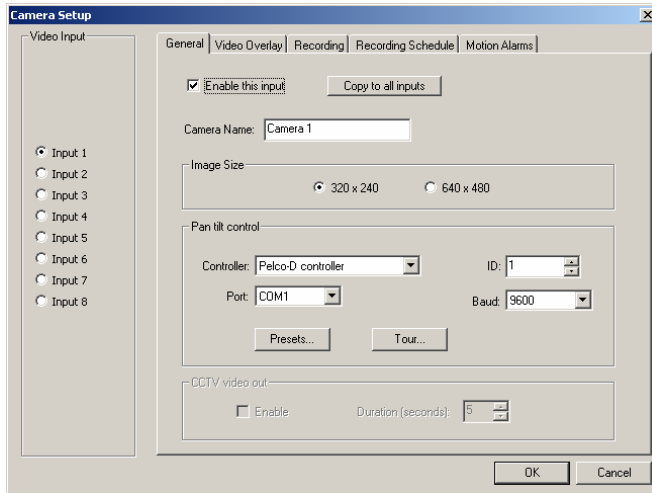
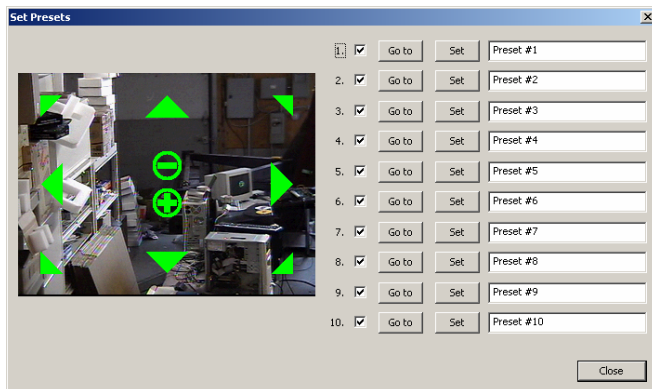


## TotalSecure 2.4 with PTZ Presets and Tour



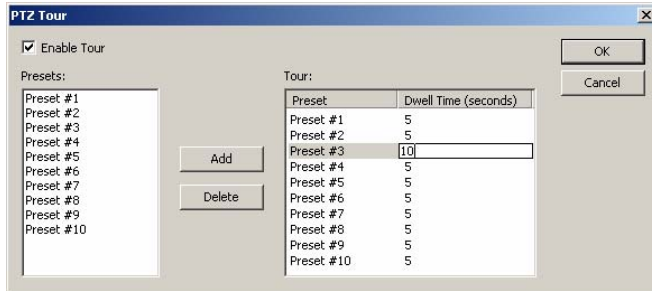
Click on Presets



Use the PTZ controls to go to a position. Place a checkbox in the Preset # you wish to assign to this camera position. Click on the “Set” button to Save this Preset. Name the Preset if desired.

Continue for up to ten Presets.

### PTZ Tour



Highlight a Preset, select “Add”, and select the “Dwell Time” (duration the Preset is held in view before switching to the next Preset).

Continue until up to 10 Presets are chosen for your Tour. Enable the Tour when ready to start the auto Tour process.

TO over-ride the Tour, either locally or remotely, click the square ICON on the PTZ camera image to gain manual control. Zoom, pan, tilt as desired. Once the manual control is finished, the PTZ green controls will time out. Once the controls time out, the Tour will continue (if enabled).